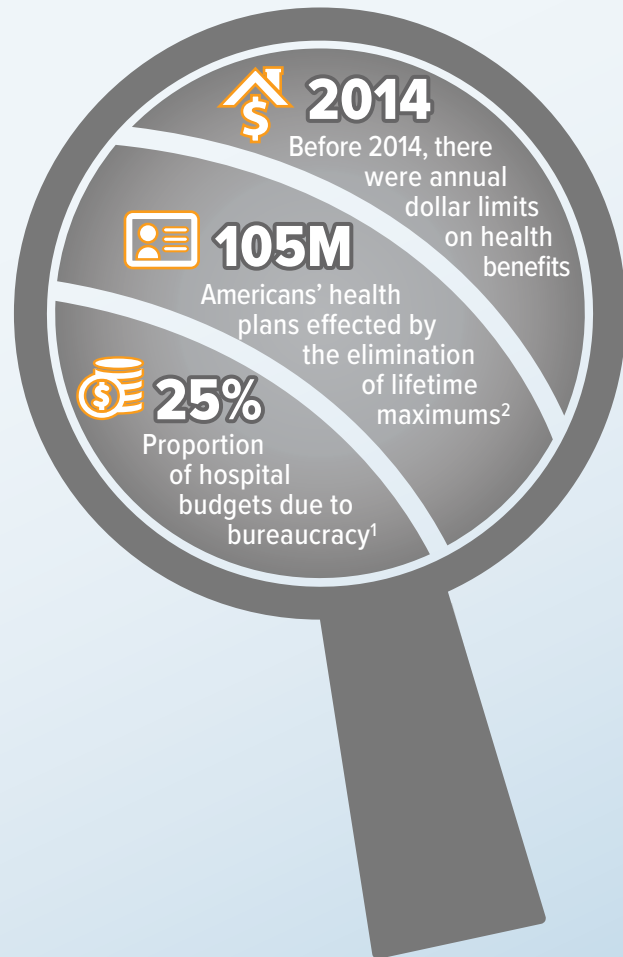


THE EVOLUTION OF HEALTH COST MANAGEMENT

Addressing the cases that drive the majority of healthcare costs through aggressive, onsite case management.

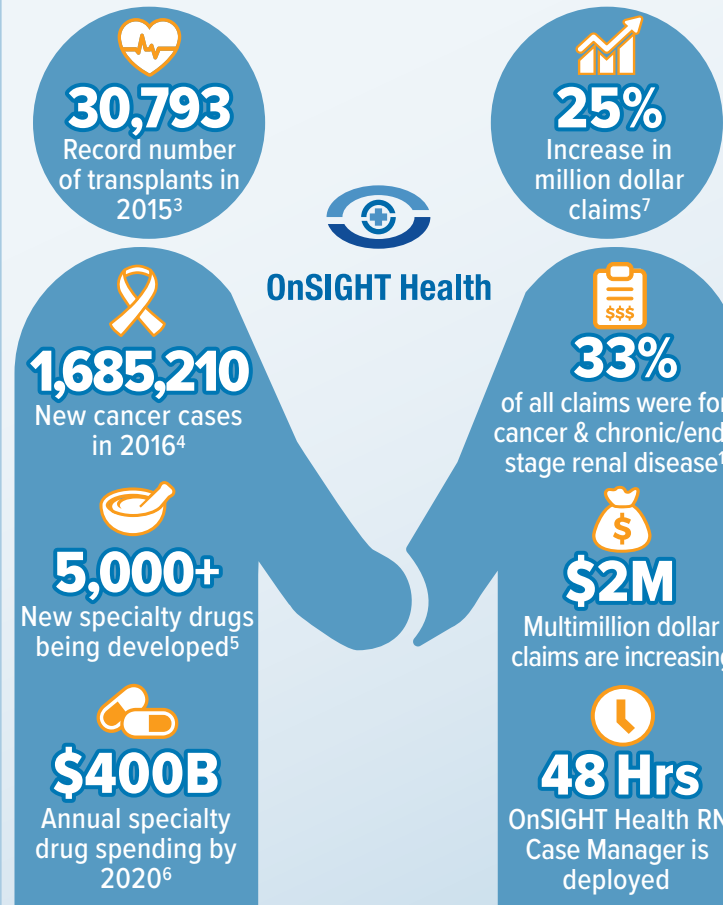
PAST

Prior to the Affordable Care Act, lifetime maximum caps forced providers to manage treatment costs more vigorously.



PRESENT

Without lifetime maximums, a “blank check” mentality has taken shape. The absence of these controls has inadvertently reduced the diligence physicians use when weighing treatment options.



SOLUTION

In today's environment, TPAs and stop loss carriers must assess all factors when paying claims. OnSIGHT Health conducts a comprehensive analysis of the patient's care and recovery time.



Communitas

communitas.com

BRINGING CLARITY TO CHAOS

We are a specialty services company within AmWINS Group Benefits that provides care management solutions to stop loss carriers, TPAs and self-funded employer plans. OnSIGHT Health, our innovative onsite case management offering, deploys Certified RN Case Managers anywhere in the country when a catastrophic, high-dollar claim hits.

¹ PNHP, Bureaucracy consumes one-quarter of US hospitals' budgets, twice as much as in other nations: Health Affairs study. Accessed March 23, 2017.

² The White House, FACT SHEET: The Affordable Care Act: Healthy Communities Six Years Later. Accessed March 23, 2017.

³ USA Today, U.S. organ transplants reach 30k milestone thanks to increased donations. Accessed March 23, 2017.

⁴ National Cancer Institute, Cancer Statistics. Accessed March 23, 2017.

⁵ Pharmacy Benefit Management Institute, 2014 PBMI Specialty Drug Report. Accessed March 23, 2017.

⁶ UnitedHealth Group, The Growth of Specialty Pharmacy. Accessed March 23, 2017.

⁷ Sun Life Stop-Loss Research Report, Top ten catastrophic claims conditions. Accessed March 23, 2017.