



WecareWorks

## WecareWorks for Online Enrollment

---

Supplemental Insurance Plans





# WecareWorks

WECARE® is the most efficient, effective, user-friendly system for the online enrollment of supplemental insurance plans. Over the past 15 years, more than 2 million employees have proven WecareWorks.

WECARE® is a proprietary benefit enrollment system developed by Impact Interactive. Its key features are:

**Advanced Web Technology** - WECARE's cloud computing streamlines benefit enrollments. It's flexible, scalable, and always available.

**Secure, Encrypted Platform** - WECARE uses sophisticated bank-level privacy and security processes. Servers are housed in an SAS 70-compliant environment.

**Flexible, Powerful Design** - WECARE can adapt to any required enrollment method: employee self-service, call center enrollments, or face-to-face interviews.

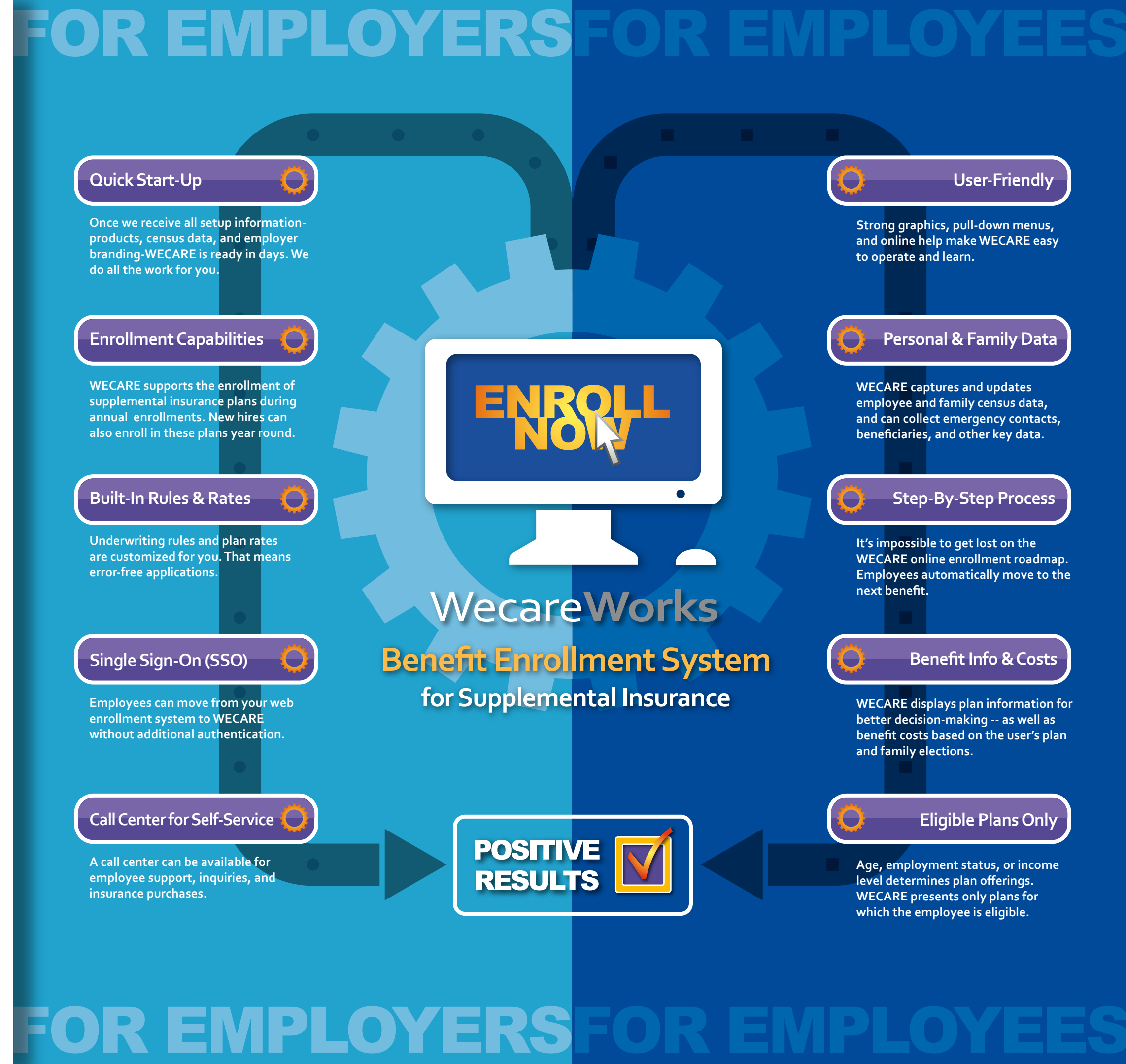
**Extensive Data Capabilities** - WECARE is a data handling machine that manages all data functions: data acquisition, integration, transmission, and distribution.

**Actionable, Real-time Reports** - WECARE delivers comprehensive reports that monitor real-time progress and performance.

WECARE is a proven, predictable, reliable, operations focused system. Its key benefits are:

- Lowers benefit enrollment administrative costs
- Reduces enrollment paperwork & data entry errors
- Captures and secures benefit enrollment data
- Improves participation in supplemental plans
- Speeds the submission & issuance of coverage

**WecareWorks. And Works Well.**



## WecareWorks Spotlight

### Single Sign-On (SSO)

Single Sign-On is a technology and a set of industry standards that (1) allows a person's electronic identity to be shared securely across multiple networks or websites, and (2) enables a person to sign into one network, with one username and one password, and immediately have access to other trusted websites to conduct transactions.

Our SSO system allows the seamless electronic transfer of employee data from your web-based benefits portal or enrollment system -- to the WECARE supplemental insurance enrollment system -- and then back to your system. SSO not only increases security by enforcing stronger authentication controls, but also provides real-time enrollment monitoring and analytics. For you, SSO is all about identity management. For your employees, it's all about convenience.

## WecareWorks for Much More

### Core Enrollments

WECARE is a total online benefit enrollment solution. It can handle all core benefits like medical, dental, and vision. Supplemental benefits like accident, critical illness, and universal life. And other benefits such as legal or identity theft plans. It tames the most complicated benefit transactions, business rules, and data integration issues.

### Dependent Eligibility Audits

WECARE offers a unique dependent eligibility audit service which combines an online dependent relationship affidavit with the employee submission of legal verification documents. It features a secure website, physical security of documents, call center support, trained auditors, and communications templates.

### Benefits Administration Systems

WECARE offers a comprehensive benefits administration system. It supports not only open enrollment, but also new hire, onboarding, and life event processes as well. It provides full benefits administration and reporting, along with customized EDI mapping to employer payroll / HRIS, carriers, and other providers.



5400 Laurel Springs Parkway Ste 1003  
Suwanee, GA 30024  
P. 800.768.6856