



**Expert Audit**<sup>®</sup>

Smart Cost Control for Healthcare.



**Expert Audit**<sup>®</sup>

Smart Cost Control for Healthcare.

## A New Approach to Dependent Eligibility Audits



5400 Laurel Springs Parkway Ste 1003  
Suwanee, GA 30024  
P. 800.768.6856



**A new, online approach to dependent eligibility audits that delivers the best results and best value for your business.**

In the past, dependent audits were conducted one way only. All employees with covered dependents were asked to submit official, legal documents verifying their family relationships.

Expert Audit offers a new approach that adds significant elements to the process. Elements that make our audit more powerful, and more valuable for you.

Expert Audit delivers the best overall results, and is the best total value because of its three unique components.

### The Component Steps.

**Step1:** The employee must complete an affidavit of truth about his or her current dependent relationships. Better results come from our drill-down questioning techniques which virtually guarantee the highest level of information accuracy.

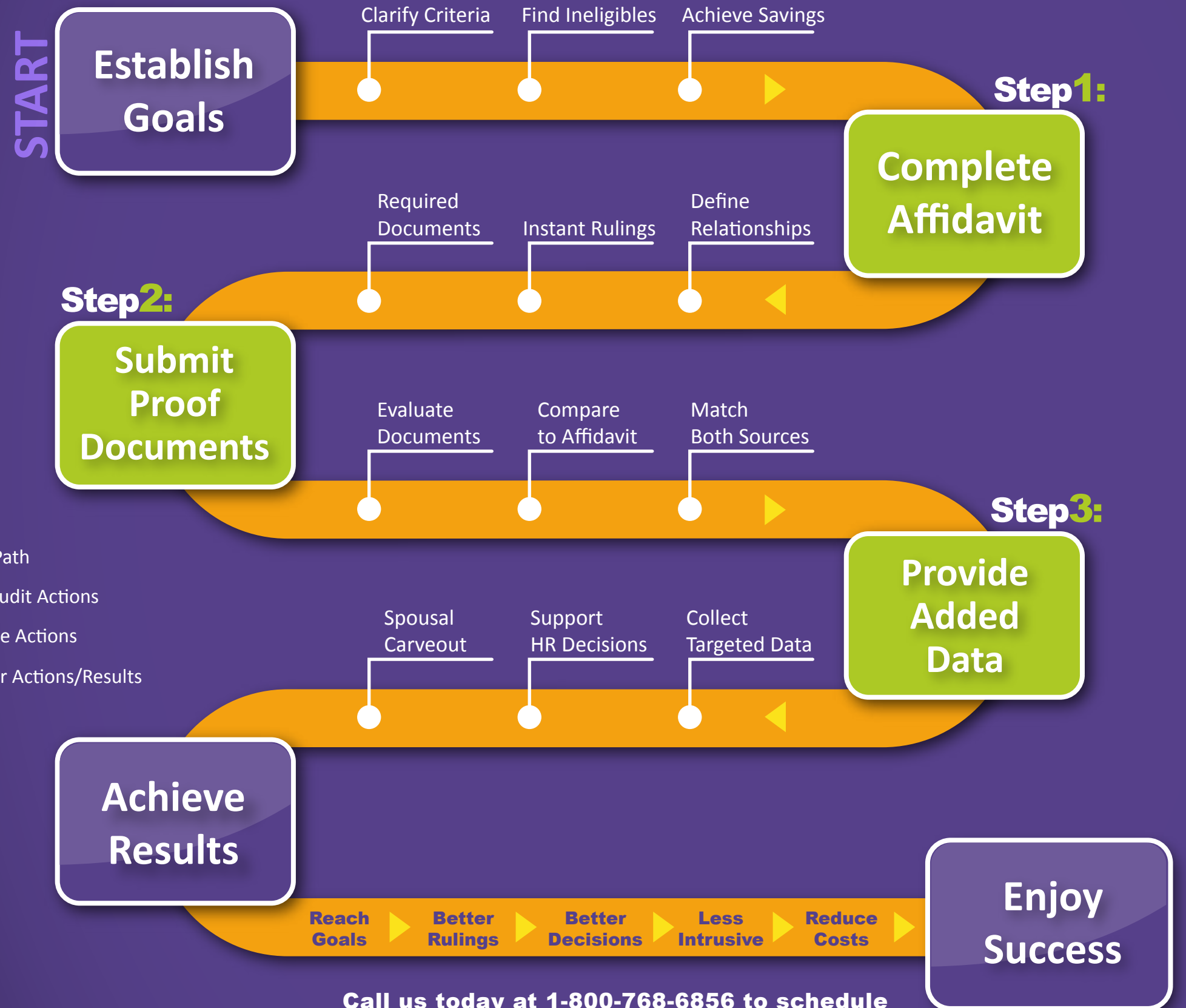
**Step2:** The employee must submit proof documents to verify the statements he or she has made online. Better results come from our information matching approach where we compare affidavit answers to document realities for more informed eligibility rulings.

**Step3:** The employee must provide added data about his or her particular family situation. Better results come from our data capture methods which allow HR to gather detailed employee information to support future benefit decisions (on spousal carveouts, for example).

### Expert Audit:

- Provides you with more information for better rulings.
- Allows you to acquire knowledge for better decisions.
- Is less intrusive for your staff and employees.
- Reduces your healthcare costs.

Why not choose the most comprehensive system available?



**Call us today at 1-800-768-6856 to schedule a live online demonstration of Expert Audit.**