

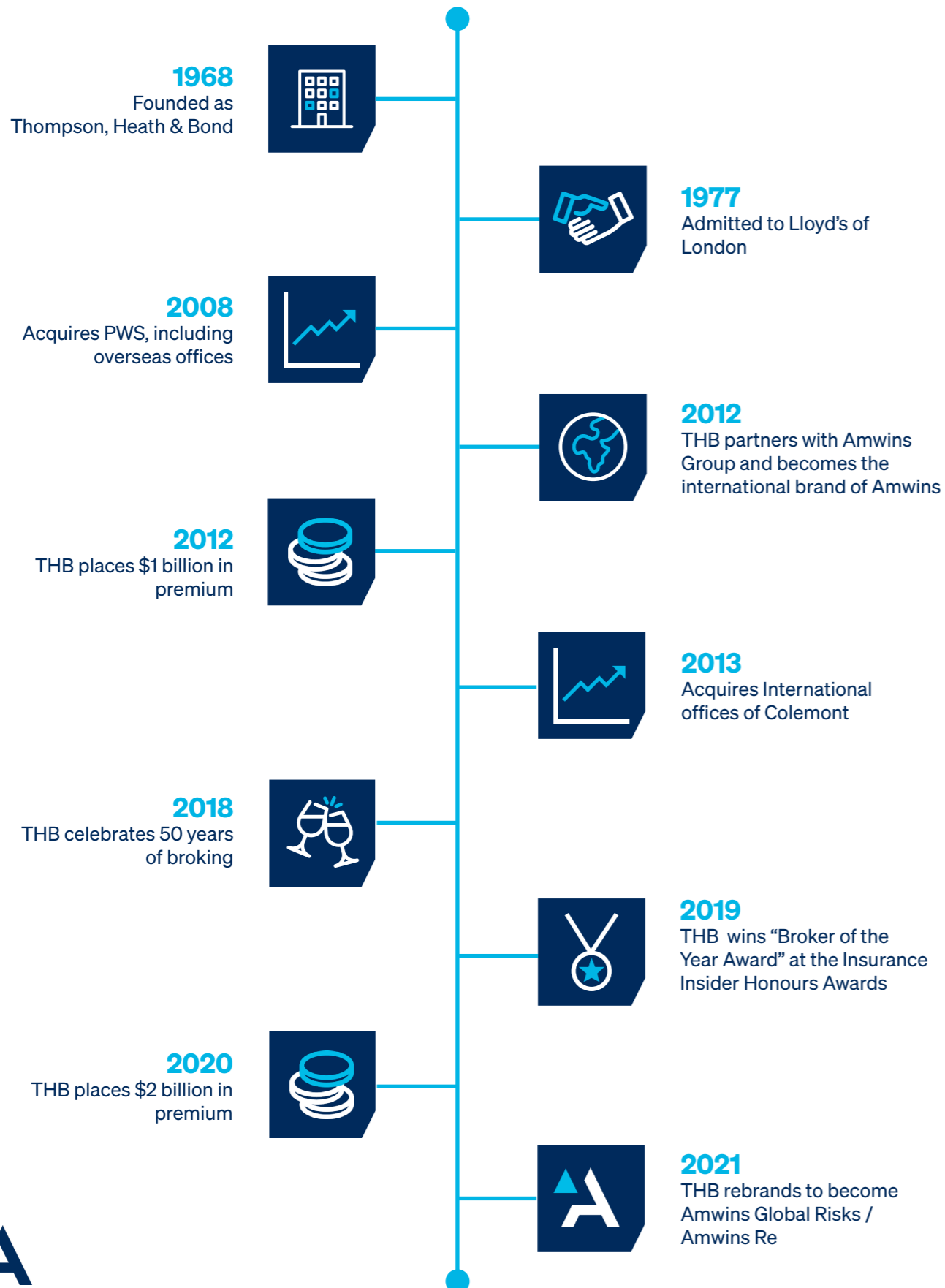


# Reinsurance

**AMWINS**<sup>™</sup> | Re

## Over 50 years of broking

Since 1968 the Amwins Global Risks (formerly known as THB) specialist broking teams have successfully delivered insurance and reinsurance cover to clients worldwide.



## The power of Amwins Re working for you

### Mission

To be your broker of choice

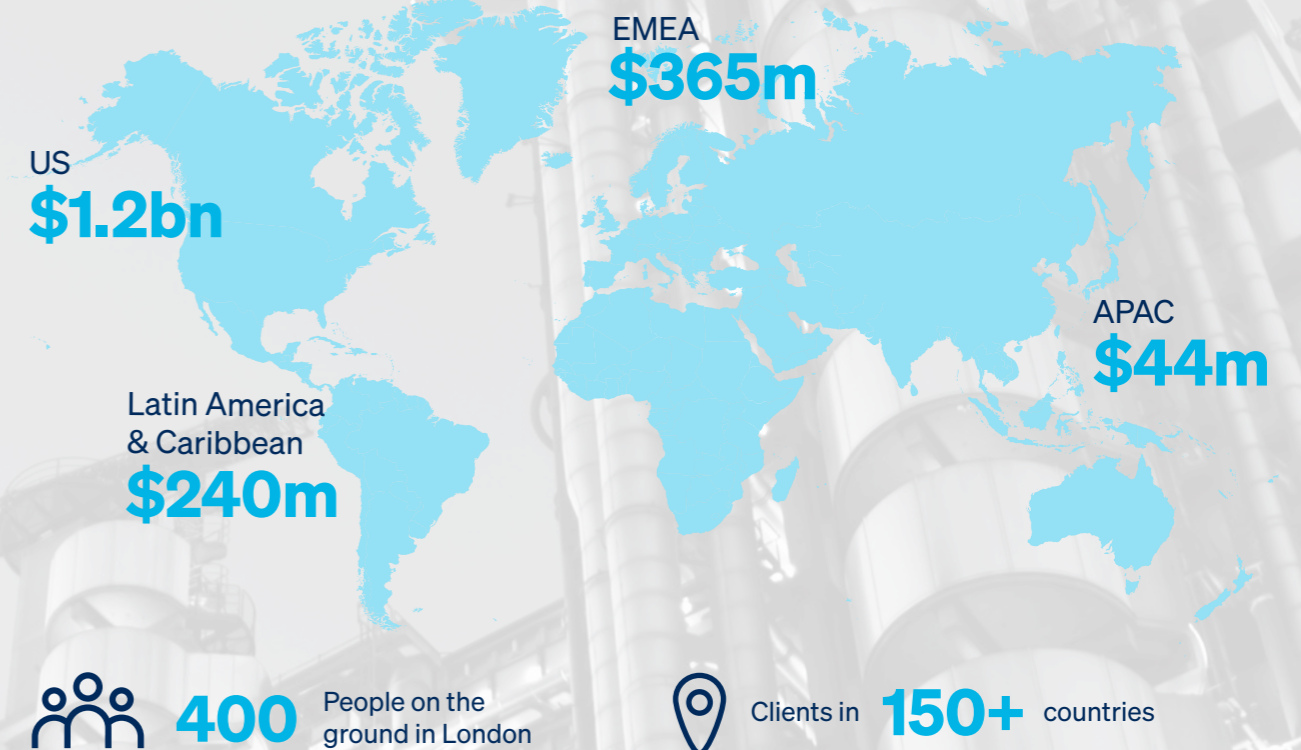
### Vision

Independent and dedicated client focus led by integrity and entrepreneurialism

### Strategy

Holistic reinsurance service by way of a global footprint, local expertise, technical know-how, analytical skills, international market access and a personal touch

## Amwins Global Risks / Amwins Re premium income by territory



### Amwins Group by numbers:

#1	wholesale broker by premium	#1	P&C wholesale broker	\$26bn	in premium placements
5,700+	employees	120+	office locations	TOP 20	insurance distributor worldwide
48%+	employee-owned	\$2bn+	premium placed into Lloyd's	#10	reinsurance broker



## Not just another reinsurance broker

Big company resources, family company values

Our 50+ year heritage and the reputation we have earned for integrity continues as we bring on the future as Amwins Re.

### Our service

With access to a worldwide web of reinsurance markets (100+), we are a team of highly experienced brokers and analysts.

We are familiar with all aspects of reinsurance, from traditional forms to alternative risk transfer solutions and parametric covers.

We advocate a holistic approach whereby Facultative and Treaty reinsurance are integrally assessed and tailored to match client requirements and expectations.

We analyse and model, design and broke prospective and retrospective bespoke reinsurance solutions to optimize client P&L protection, capital position and solvency ratio.

### Our team

We are a global team of specialist brokers, with local knowledge and expertise, offering facultative and treaty solutions to a worldwide client base.

With a centralised back office for accounting, claims and administrative support in the UK, alongside actuarial analysts and cat & risk modelling hubs in the UK and US, we have the expertise and connections to secure solutions for challenging and complex risks.

## Bring on the future

## Areas of expertise Facultative & Treaty



Aviation



Engineering



Financial &  
Professional Lines



Property



Bonds &  
Surety



Marine



Casualty &  
Liability



Life, Accident  
& Health



Agriculture



Energy &  
Renewables



Terrorism &  
Cyber



Medical  
Malpractice



Data &  
Analytics



Actuarial  
Services



Catastrophe &  
Risk Modelling



# Amwins Re as your partner of choice

partnership = trust = confidence

partnership = sharing views = better solutions

partnership = data analytics = robust outcomes

partnership = tailored deals = optimal results

partnership = working together = more fun

## Our offices



UK



The Netherlands



Portugal



US



Argentina



Mexico



Colombia



Chile



Brazil



Ecuador



Peru



South Korea



Before renaming as Amwins Global Risks you knew us as THB.

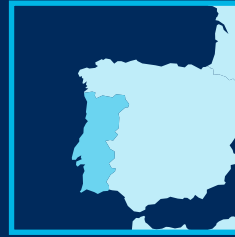
As Amwins, we have the scale, stability and resources of a global (re)insurance broker.

We're still the same broking experts, still here for you.



**AMWINS RE**

Building Parktoren  
Van Heuven Goedhartlaan 7-13  
1181 LE Amstelveen  
The Netherlands  
T: +31 20 695 9798



**AMWINS RE**

Avenida da Republica 18  
3rd floor, office nr. 301  
1050-191 Lisbon  
Portugal  
T: +351 210 480 519



**RICARDO BORGES**  
MANAGING DIRECTOR

T: +31 6 50 87 17 26  
E: rborges@amwingslobalrisks.com

**ZAMIRA THURNIM**  
DIRECTOR

T: +31 6 52 76 23 68  
E: zthurnim@amwingslobalrisks.com

**NUNO INACIO**  
BROKER

T: +351 919 344 406  
E: ninacio@amwingslobalrisks.com

**KO BERTELKAMP**  
EXECUTIVE DIRECTOR

T: +31 6 15 57 24 87  
E: kbertelkamp@amwingslobalrisks.com

**EWOUDEKKER**  
DIRECTOR

T: +31 6 53 56 98 89  
E: edekker@amwingslobalrisks.com

**INÉS NORONHA**  
JUNIOR REINSURANCE BROKER

T: +351 914 326 163  
E: inoronha@amwingslobalrisks.com

**BOB REICHENFELD**  
EXECUTIVE DIRECTOR

T: +31 6 55 88 05 44  
E: breichenfeld@amwingslobalrisks.com

**ANNET VAN DER ENG**  
BROKER

T: +31 6 15 58 09 86  
E: annet.vandereng@amwingslobalrisks.com

**LOTTE GOETSTOUWERS**  
OFFICE MANAGER

T: +31 6 31 68 36 15  
E: lgoetstouwers@amwingslobalrisks.com

**RODRIGO BOTELHO**  
DIRECTOR

T: +31 6 52 76 20 25  
E: rbotelho@amwingslobalrisks.com

**JORD WESTERLOO**  
BROKER

T: +31 6 11 34 16 94  
E: jwesterloo@amwingslobalrisks.com

amwingslobalrisks.com  
10.21

Amwins Re is a trading name of Amwins Global Risks B.V. | Authorised and regulated by the Netherlands Authority for the Financial Markets (AFM) and by the Financial Conduct Authority (FCA)

Chamber of Commerce 73364592 | Registered office: Van Heuven Goedhartlaan 7 | 1181 LE | Amstelveen

