



# Upstream & Midstream Energy

**AMWINS™**

GLOBAL RISKS

### OPERATOR'S EXTRA EXPENSE

Costs of Well Control, Re-drilling of Wells, Seepage and Pollution and various additional coverages incl. Care, Custody and Control (CCC), Underground Blowout Making Wells Safe

### LOSS OF PRODUCTION INCOME (LOPI), BUSINESS INTERRUPTION (BI), CONTINGENT LOPI AND BI

### PHYSICAL DAMAGE OFFSHORE

Platforms, Rigs, Pipelines, FPSOs, Subsea Equipment, Contractors Plant and Equipment

### CONSTRUCTION

Offshore: Platforms, Rigs, FPSOs, Pipelines, Subsea Facilities.  
Onshore: Processing and Gathering Property.

### PHYSICAL DAMAGE ONSHORE

Rigs and Equipment, Oil Lease Property, Contractors Plant and Equipment, Processing Plants, Gathering Systems and Pipelines and Equipment, Excess CCC, Real and Personal Property

### LIABILITY

Commercial General Liability, Umbrella Liability, Maritime Employer's

## On your team

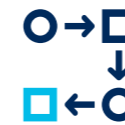
We see the completion of the placement as just the 'end of the beginning'. And we know that our clients expect that all services flowing from the placement are carried out promptly, accurately and with the highest level of professional service.

Our team is an extension of your team.



#### Partnership orientated

We recognise that our relationships with our clients are based on the value that we add. We align our priorities with yours and aim to be your trusted advisers as well as your broker.



#### Territories

The Upstream Energy team has the know how to handle Energy risks from many parts of the world and understands the various local requirements of those different territories.



#### Innovative and creative team

Our highly experienced team comprises individuals who are specialised in their chosen field. We have a range of backgrounds and skill-sets, including senior brokers and account executives who have been involved in Energy insurance for over 30 years. It is the combination of these skills and experience that allows us to think not only as brokers but also as specialists in order to drive creative and innovative solutions to our clients' needs.

## Key industries

#### Offshore and onshore

- Oil companies
- Oil and gas lease operators and non-operators
- Drilling contractors
- Energy related service contractors
- Energy construction companies

#### Midstream

- Onshore midstream property owners and operators  
- processing plants, equipment, pipelines etc





## Energy facilities

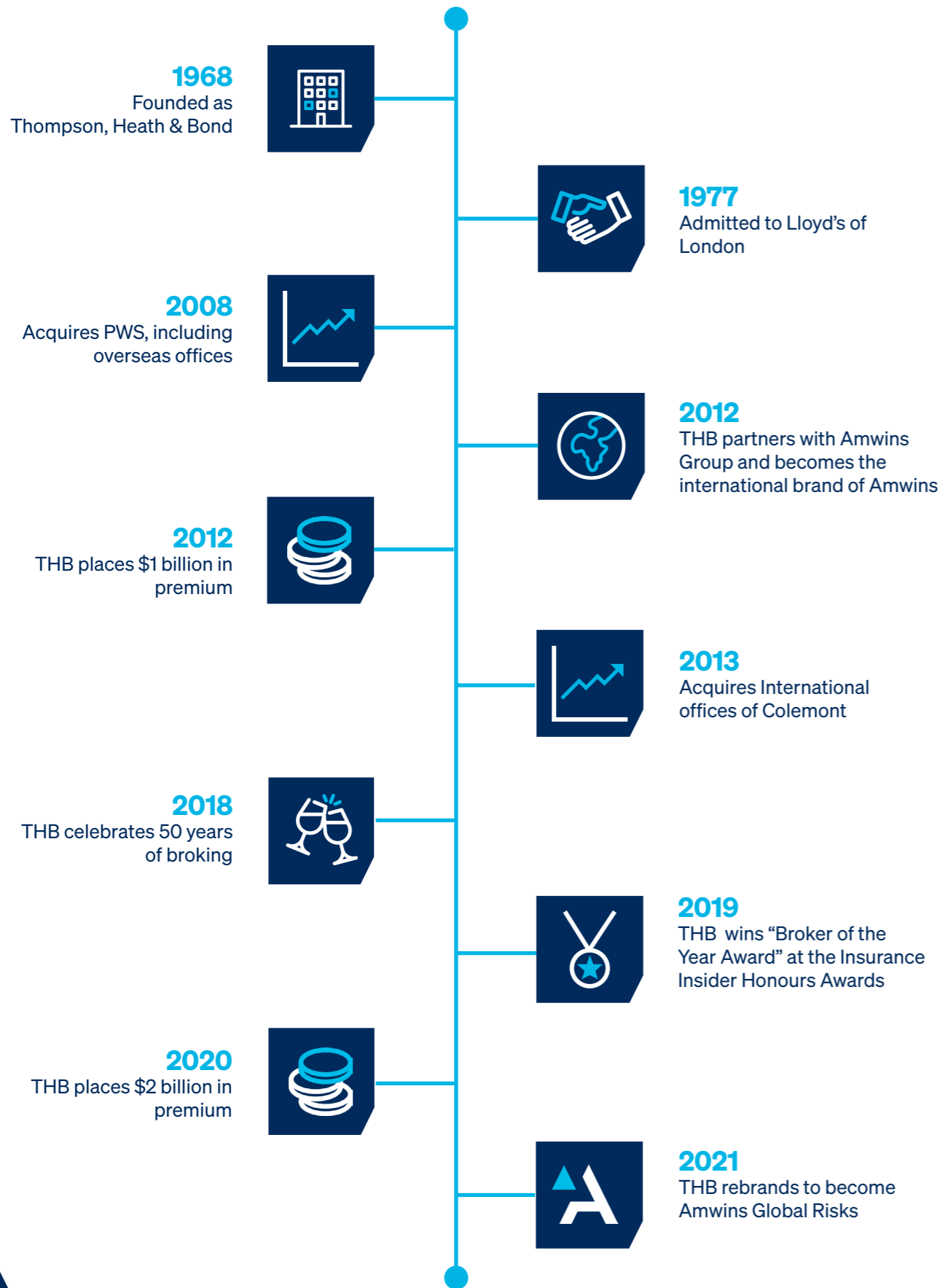
We run the following facilities which, by way of business volume declared, enables us to provide our clients with distinct advantages:

- **Property/OEE Facility**  
**Property**  
US/CA \$75m Sum Insured/Limit, Upstream and Midstream Property  
**OEE**  
US/CA \$75m Limit  
**PD/OEE Package**  
US/CA \$100m Combined Limit
- **Small OEE Facility (Minimum Premium)**  
US/CA \$5m Limit + \$5m CCC + \$5m Associated Property. Set minimum premiums for Limit
- **Commercial General Liability**  
US \$1m/\$2m Aggregate Limit, Upstream Energy including Lease Operators, Energy Contractors
- **Umbrella Liability Facility**  
US \$20m Limit, Upstream Energy including Lease Operators, Energy Contractors
- **Maritime Employer's Liability Facility**  
US \$1m Limit, Excess Layers Facultatively, Soft and Hard Exposures, from If Any exposures to Divers



# 50 years of broking

Before renaming as Amwins Global Risks you knew us as THB. Since 1968 THB's specialist broking teams have successfully delivered insurance and reinsurance cover to clients worldwide.



# The power of Amwins Global Risks working for you

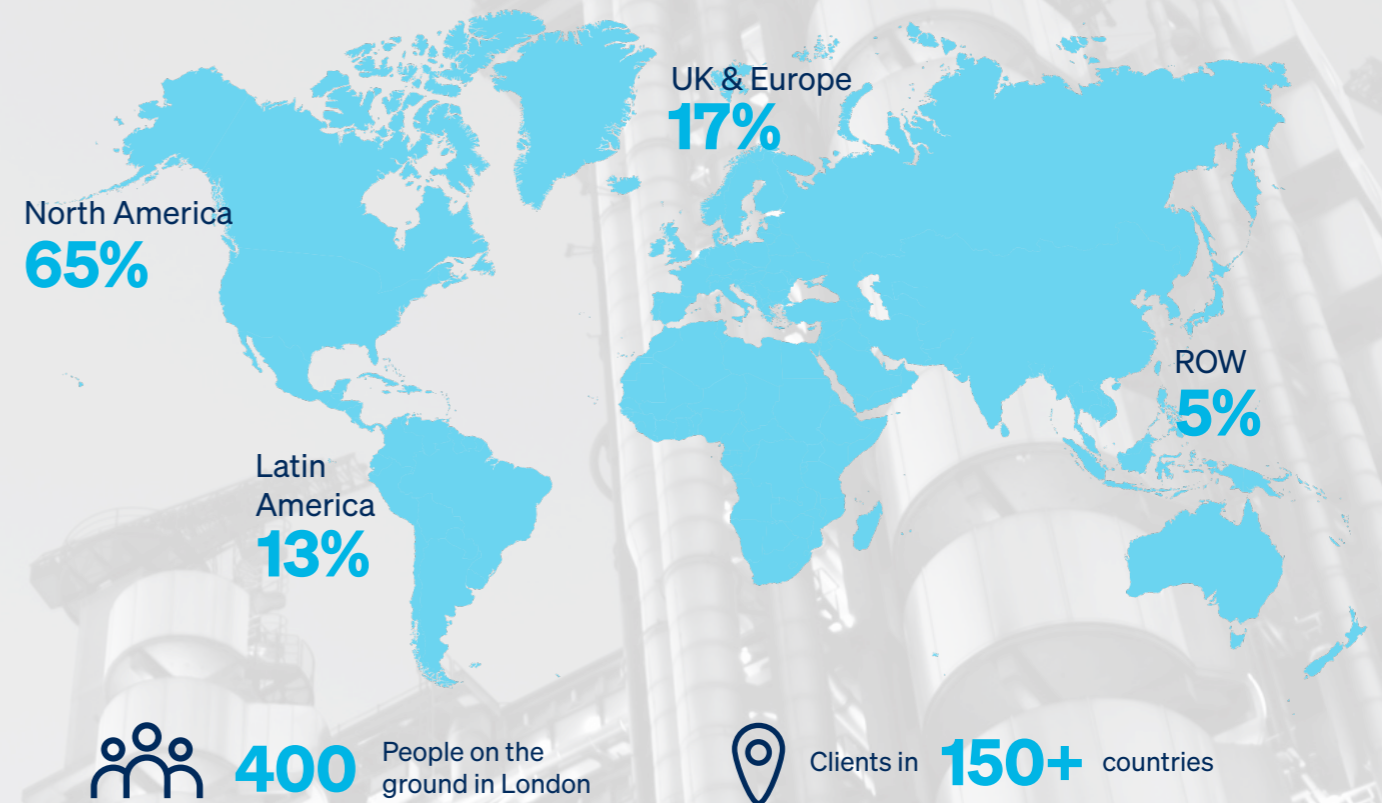
**\$2 billion+**  
2020 Premium income

**#1**  
Largest independent  
wholesale broker in  
Lloyd's

**Top 10**  
Global reinsurance  
intermediary

**\$5 billion+**  
Total claims handled in  
the past 5 years by our  
award-winning Claims  
team

# Amwins Global Risks premium income by territory



Total group premium placements:

**\$26 billion+**

Total group premium volume to Lloyd's & London Market:

**\$2 billion+**

Amwins represents:

**3%** Of all Lloyd's premium

**14.5%** Of all Lloyd's E&S US premium

**TOP 10** Lloyd's contributor

Before renaming as Amwins Global Risks you knew us as THB.

As Amwins, we have the scale, stability and resources of a global (re)insurance broker.

We're still the same broking experts, still here for you.

---

**UPSTREAM & MIDSTREAM  
ENERGY**

[mail@amwingslobalrisks.com](mailto:mail@amwingslobalrisks.com)

+44 (0)20 7469 0100

**CHARLIE COMPTON**  
SENIOR BROKER

T: +44 (0)20 7444 9504

M: +44 (0)7956 417 934

E: [ccompton@amwingslobalrisks.com](mailto:ccompton@amwingslobalrisks.com)

[amwingslobalrisks.com](http://amwingslobalrisks.com)

06.22

Amwins Global Risks Limited is authorised and regulated by the Financial Conduct Authority  
Registered Office: 22 Bishopsgate | London EC2N 4BQ | England company number 929224

